

**Interface**<sup>®</sup>

12-08-15

**Mark Haverlach**



# Sluiten van de cirkel; “modulaire vloerbedekking



# Demonstratie van onze innovatiekracht...



### Our goals 2015

**DACHSER**  
Intelligent Logistics

- To reduce specific CO<sub>2</sub> emissions\* in the transport sector by 13% from 2005 levels
- To reduce specific emissions of nitrous gases (NOX)\* in the transport sector by 25% from 2005 levels
- To reduce specific emissions of particulate matter (PM)\* in the transport sector by 25% from 2005 levels
- To have 60% of the trucks used by Dachser in conformance with Emission Class 5 or better

\* in regard to ton  
The figures shown could change in the future as the result of the following:  
New requirements in the market regarding the method of calculation  
New technological developments or innovative new products (e.g. in vehicle equipment)

#### Calculation of the green house gases in the transport area

Transport services divided into individual legs:  
Local transport (pickup/delivery)

- Required data:
  - Point of origin and weight of load
  - Distance in kilometers
  - Weight of load
  - Steps: Delivery/backup
  - Type of truck + allowable total weight + payload
  - Emission class

We have on hand all data regarding our trip dates, contractor invoicing and delivery route sequences.

#### Calculation of the green house gases in the transport area

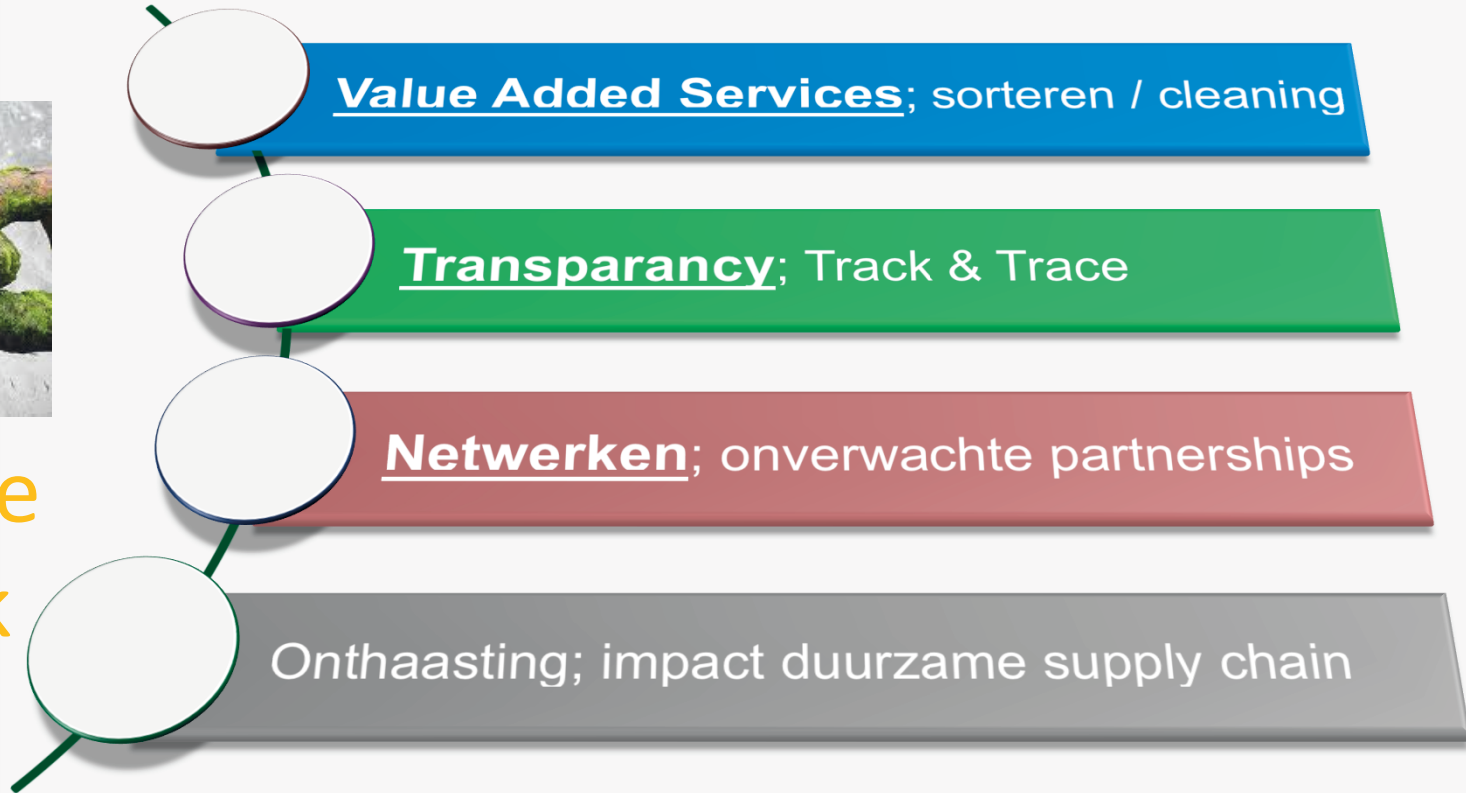
Transport services divided into individual legs:  
Main leg

- Required data:
  - Origin: Mileage calculation based on weight of the load and payload of the truck
  - Destination: Mileage calculation based on weight of the load and payload of the truck
- Weight of each consignment
- Weight of entire load
- Type of truck + allowable total weight + payload
- Emission class
- Distance in kilometers

We have on hand all data regarding our trip dates, contractor invoicing and delivery route sequences.



## Duurzame Logistiek



Performance partnership

**Sustainable** Trust

Innovation **Logistics**

agility

Leadership

Transparency

# Net-works; een “community based” supply chain

6

